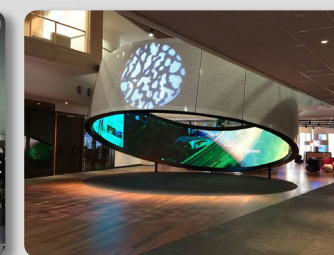


# Flexible Series

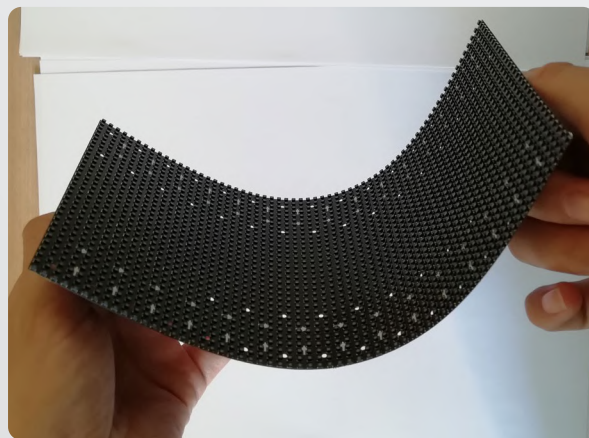
Permanent Installation for Custom Projects



# FLEXIBLE SERIES FEATURES

## FLEXIBLE PCB | CUSTOMIZE YOUR CONCEPT

Our revolutionary flexible PCB technology has been coupled with a soft PCB and guarantees a durable structural design, not only for the technology, but also for the curvability for integration.



## FLEXIBLE MODULES | SHAPING YOUR PROJECT

Our soft PCB allows you create any concave & convex design to even the smallest of curved degrees. The Flexible Series enables users to design their concepts with zero issues in terms of creativity.



## COMPACTY DESIGN | ULTRA-THIN & LIGHT-WEIGHT

Our panel has been designed with an ultra-thinness of only 12mm. A single panel consist of 1200mm x 600mm and a mere weight of 11KG. Our maintenance team can easily handle any panel with ease and reduce the overall risk of damages during urgent installation.

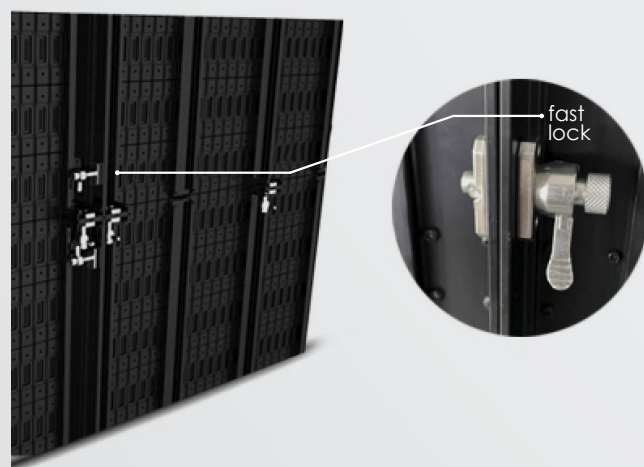




# FLEXIBLE SERIES FEATURES

## DESIGNED FOR QUICK INSTALL AND DEMOLITION

Our panels and controller have all been designed for front maintenance, so a catwalk for back-service is not required. Simply unlatch the locking system and remove your panel seamlessly.



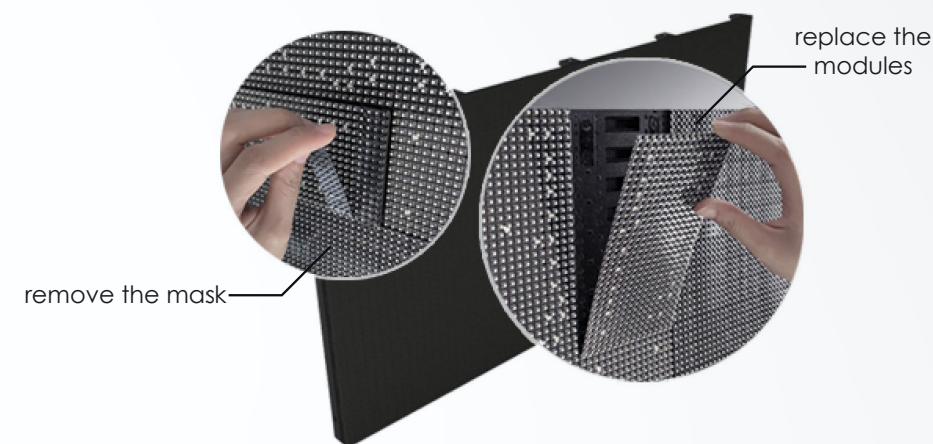
## FLEXIBLE INSTALLATION METHODS

Flat & curve hanging, stacking installations are all available.



## FRONT MAINTENANCE MADE SIMPLE

The unique modular design of these front maintenance modules allows users to quickly replace within seconds. Do not worry about screen down time, since your maintenance can be in and out before the audience notices.



## ULTRA LONG PANEL FOR FAST SETUP

The max height of panel is 6.4m, saving the installaiton time.

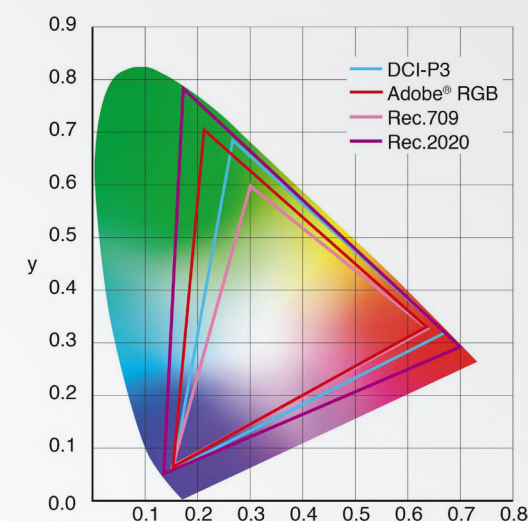




## DCI-P3 AVAILABILITY

Pledco is now the first LED display company in the industry to integrate the DCI-P3 Color Gamut at 100% as our new optional standard. We took it upon ourselves to match the DCI-P3 Gamut based on famous brands such as; Apple, Microsoft, Samsung and Google. Our Flexible Series' P1.5-1.9-2.5mm can be equipped using the DCI-P3 at 100% as an optional requirement.

\* HDR 10 Media Profile / Dolby vision supported



## LOW BRIGHTNESS & HIGH GREY LEVELS

The Flexible Series' Indoor LED Display cabinet has the ability to project high levels of grey while maintaining low brightness. The grayscale comparison can be seen below to prove our technology's pristine imagery. Standard LED display cabinets fail to reach high levels of grey scale due to low quality engineering from their software and calibration, however, Pledco's advanced software, control system and calibration enables us to reach these picturesque levels while maintaining low brightness.

## HD BROADCAST COMPATIBLE

The Flexible Series' Indoor LED Display cabinet is HD Broadcast compatible for television recording. Our ultra-high refresh rates ensure when broadcasting live television the LED display stays flicker free but more importantly continues to project pristine imagery. In addition all our HD LED display are fully equipped with a full redundancy control system to ensure zero downtime during a live event.









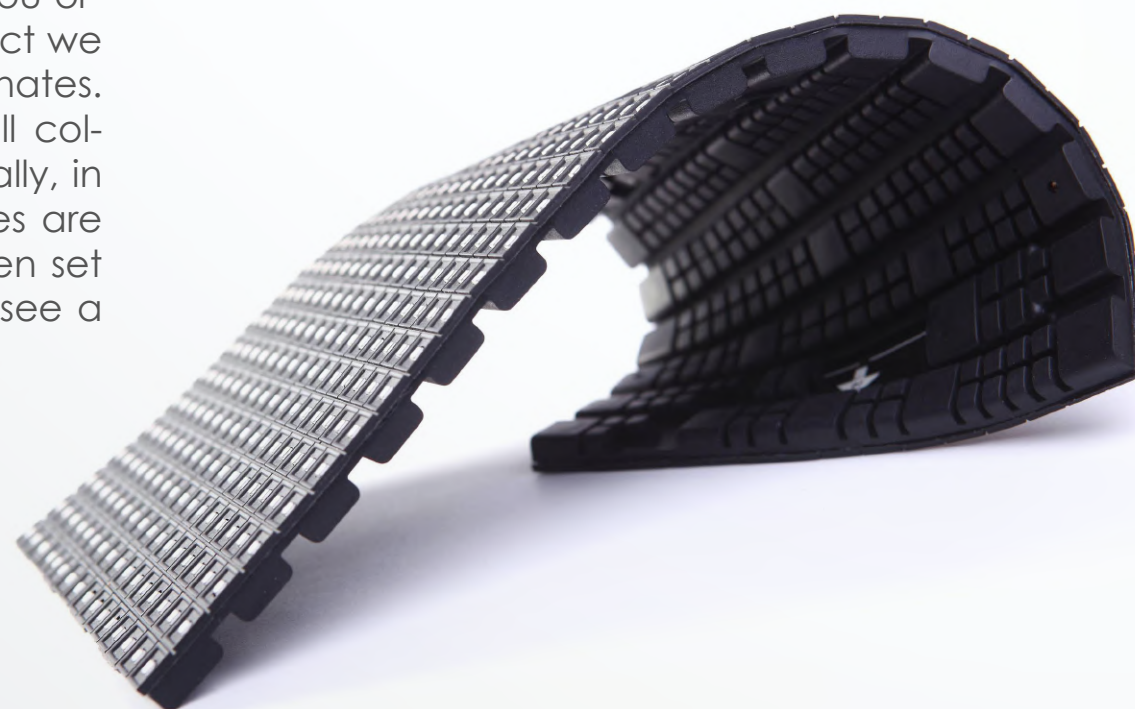


PLEDCO HD DISPLAY

Our calibration technology reaches all possible X & Y coordinates ensuring you HD broadcasting experience is crystal clear.

## SYSTEM CALIBRATION

All X & Y coordinates are kept in our client project database. When you order new tiles for an existing project we retrieve the original X & Y coordinates. This ensures during calibration all colors are matched properly. Typically, in video mode, no color differences are visible, however, if white has been set at 50% brightness, the user may see a slight difference in color.



### 1 **COLOR ENHANCING**

After calibrating with our Radiant PM-1400F Calibration System in a dark room, the wave length difference for each color will only be less than 0.1nm. Our patented control system allows users to select several different color spaces or create your own color space by using our user-friendly software.

### 2 **COLOR COORDINATION PROCESS**

The same batch of LED's with discrete distribution are all moved to PAL Mode Chroma Area through color coordinate calibration Technology.

Since each LED batch produced has different coordinates this requires precise color calibration, which in turn allows:

- ▶ The LED display to show natural and vivid colors.
- ▶ All LEDs have been color rendered consistently.
- ▶ Color Spaces Available: ADOBE RGB, REC-709, and DCI-P3 as optional.

### 3 **DIGITAL DATA REVISION**

If a single pixel fails, the data will be read-out from the EEPROM and then re-wrote to the replacement chip. After this process the brightness value is calibrated again to ensure the uniformity of the entire system, thus providing easy and fast maintainability.

At the same time, the system records every displays' initial calibration data to avoid uneven brightness caused by led attenuation. The updated screen brightness calibration data and recorded data, both ensure the uniformity of the display's brightness over a period of time.



# CONTROL SYSTEM 4K PROCESSING

Input			
Type	Channel	Connector	Details
DisplayPort	1	DisplayPort Standard	Supports DisplayPort 1.2. Max.3840×2160@30Hz
HDMI	3	HDMI Standard	Supports HDMI 2.0 Max.3840×2160@30Hz
DVI	2	DVI-I	Analog inputs not supported. DVI1 Supports dual-link Max.2560×1600@60Hz
SDI	1	BNC	Supports SMPTE 425M-Level A(3G-SDI), SMPTE 292M(HD-SDI), SMPTE 259M-C(SDI)
VGA	1	HD-15	Max.1080P@60Hz
YPrPb	1	3.5mm jack	Max.1080P@60Hz
Genlock	1	BNC	SD bi-level and HD tri-level sync, PAL, NTSC, 720p, 1080i/p, 576i/p, 480i/p
Output			
Type	Channel	Connector	Details
DisplayPort	1	DisplayPort Standard	Supports DisplayPort 1.2. Max.3840×2160@30Hz
HDMI	1	HDMI Standard	HDMI2.0.Suports 12bit deep color
DVI	1	DVI-I	Loop out from DVI2 input
SDI	1	BNC	Loop out from SDI input
Genlock	1	BNC	Loop out from Genlock Input
SPDIF	1	RCA	Supports standard S/PDIF for stereo LPCM or compressed audio up to 192 kHz
Headphone	1	6.5mm audio jack	Stereo Audio Output
LED Datalink	6	Neutrik etherCON	1Gbps/port
Others			
Control Methods	USB, Gigabit Ethernet, IR, HMI on the Font Panel		
Power	Neutrik powerCON connector, 100-240 VAC, 50-60 Hz, Max.25W		
Temperature	-10 ~ +50 °C		
Mechanical	472×375×90 mm		
Optional			
	Fiber optical direct output, single mode or multi mode MPU9000 (FM or FS)		

- Integrated with SWITCH Monitor(2x2), Video Processor, Full-HD Media Payer and LED Display Controller
- Supports SD Card and mSATA SSD Mass Storage devices (up to 256GB for SSD and 200GB for SD)
- Available in fiber version with single mode or multi mode direct fiber output
- Supports DisplayPort 1.2, HDMI 2.0, dual-link DVI and 3G SDI Inputs
- Advanced Faroudja® video processing: MADi and DCDi
- Supports daisy chaining of monitors of up to four streams
- 6GB LED Display Data Link(optional fiber output)
- 6-axis color control independent of ACC
- 4K×2K screen resolution support
- Gigabit Ethernet
- Built-in 6.5mm audio jack
- SPDIF Output by coaxial
- Supports Genlock
- Built-in Monitor
- 20 bit Processing





# GENERAL PRODUCT CONFIGURATION

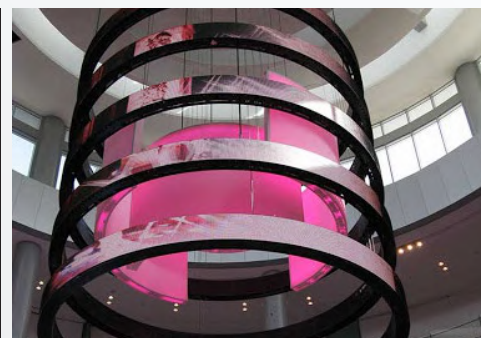
Custom designed by an industry leading Canadian engineer, our Flexible Series is equipped with automatic brightness technology to overcome any lighting conditions while delivering HD imagery.



PLEDCO

## THE FUTURE of LED technology

From sports stadiums, to spectaculars and beyond, PLEDCO has over 25 years' experience in meeting customers' unique needs. Backed by a talented team of engineers and designers and a robust product line offering, PLEDCO can turn your display dream into a reality.



Technical Specifications		R1.905	R2.54	R3.81	RO3.81
Display Technology	Pixel Pitch (mm)	1.905	2.54	3.81	3.81
	Pixel Configuration	SMD 1515	SMD 1515	SMD 2020	SMD 1921
	LED Packaging Wire Material	Gold Wire NS FM series or NS Reestar series for 6 years warranty.			
	Maximum Calibrated Brightness	800 nits (Optional 1000 nits)			4500 nits
	Viewing Angle (Deg)	160 x 160 with Led directivity angle at 140 x 140			
	Refresh Rate	>= 3840 Hz	>= 3840 Hz	>= 3840 Hz	>= 3840 Hz
	Scan Rate	1/32	1/30	1/12	1/8
	Color Temperature (°K)	3000 to 10000 with present and customization			
Signal	Inputs	HDMI(1.4) / DP(1.2) / HDS DI / Dual link DVI			
	Max Input Resolution	3840 x 2160 @30fps or 3840 x 1080 @ 60fps per processor.			
	Scaling	HD scaler with built in player (up to 256GB storage)			
	Color Depth	8-10-12 bits			
	Standard Supported	HDR 10 media profile and Dolby vision			
Power	Input Rating	100 - 240 VAC @50-60Hz			
	Max Power Consumption By SQM	450 w/sqm	450 w/sqm	450 w/sqm	532 w/sqm
	Av Power Consumption By SQM	150 w/sqm	150 w/sqm	150 w/sqm	175 w/sqm
	Optional Power Distributor (PDU)	10-25-40 KW w/ noise protection and electronic triggering.			
Environment	Operating Temperature	-20 to 50°C (14 to 113°F)			
	Operating Humidity	0-90% non-condensing			
	Storage Temperature	10 to 90°C (14 to 122°F)			
	Environment	INDOOR			OUTDOOR
	IP Rating	43			65
	LED Lifespan (50% Brightness)	>=100 000 hrs.			
Module	Module (Tile) Weight	1.1kg	1.05kg	0.9kg	2.5kg
	Service Access	Front service maintenance w/ magnetic tool and fixation			
	Installation Options	Flat or concave (optional sub structure)			
	Module Dimensions (wxh - mm)	304.8 x 152.4			
	Module Resolution (px)	160 x 80	120 x 60	80 x 40	80 x 40
Certifications	Electrical	cETLus / CE			
	Electromagnetic	EMIC / FCC / ICES-003			
Warranty	All Parts	3 years or 6 years			

\* Further detailed configuration available upon request.





## CUSTOMER SERVICE

At PLEDCO, we strongly emphasize the importance of customer relationships, and their trust in our products. Our key to lasting relationships focuses on delivering world-class LED products, while promising exceptional customer service and reliability, ensuring our clients a relaxing experience. PLEDCO is recognized as an industry leading LED total solution provider, from initial inquiry to after sales, our heavily trained team will guide you step-by-step through the entire process of your LED project.

### Installation Support

Our skilled technicians can professionally install your LED Displays without disturbing your projects schedule. Mitigation and problem-solving are inevitable during the installation process, and PLEDCO's installation "Gurus" have the experience, know-how, and technical expertise to handle nearly any situation. We are able to provide you with all the required documents including; specification sheets, system diagrams, complete display and structure elevation drawings, and 3D rendering if required. As your dedicated total solution provider, we promise to be there step-by-step guiding you through your project, from initiation to closing.

### 24/7 Technical support via online or phone

Our phone and online live support systems enable us to provide 24/7 technical assistance. If you require urgent assistance, our skilled technicians are always ready to help, regardless of difficulty. Technicians are required to pass intensive training and testing to ensure issues are dealt-with professionally and accurately, while emphasizing the importance of your project's schedule.

### Warranty & Maintenance

With over 20 years of combined professional experience, our internationally exposed engineers have specially designed and developed LED Display solutions to cope with harsh environments and withstand extreme temperatures. However, in the event of a problem, our highly experienced technical support team promises minimal display downtime by utilizing our bullet-proof troubleshooting expertise. Nearly all of Pledco's products include a 5-year warranty, with optional extensions available upon request.

### Parts Availability for the Next 15 Years

Our manufacturing facility produces all the parts used assemble our LED displays. More importantly, we own all the technology, molds and PCB layout designs that are used to develop these parts. This provides us with the reliability knowing exactly what materials are being used and ensures the quality of our products can easily be managed directly from the production level. One of the biggest after-sales issues a client could have is being able to receive replacement LEDs that have been recalibrated exactly the same as the display when first produced. PLEDCO is one of the few companies in the world who utilizes the international HD NTSC REC-709 calibration in LED display, thus making it possible for us to provide our clients the exact same LEDs to match their display by using Radiant's camera technology.





PLEDCO LTD.  
Kiu Fu Commercial Building  
300 Lockhart, Hong Kong

---

[pledco.com](http://pledco.com)  
[info@pledco.com](mailto:info@pledco.com)